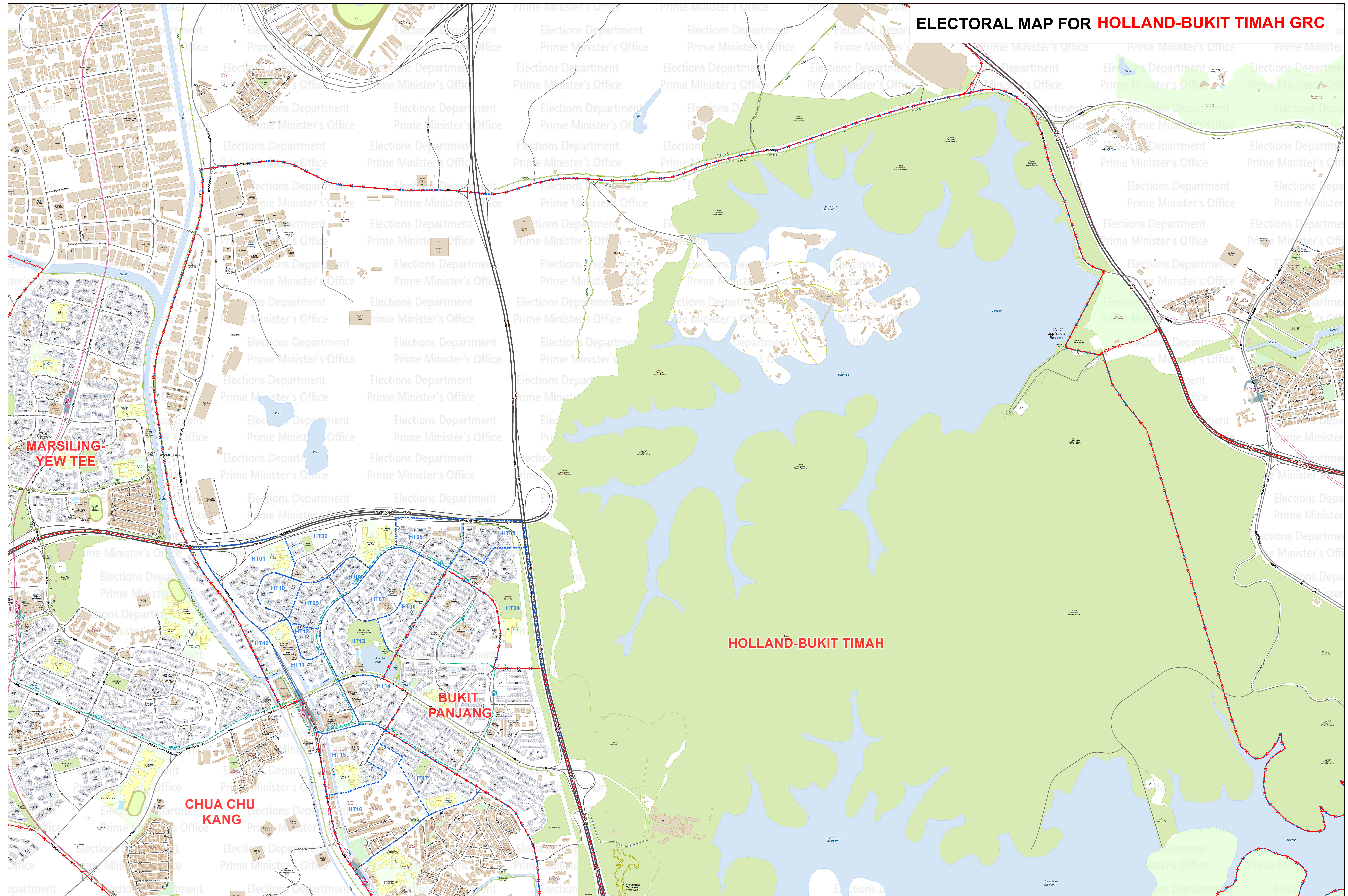


ELECTORAL MAP FOR HOLLAND-BUKIT TIMAH GRC



Legend

- HDB Building
- Non-HDB Building
- MRT/LRT Station

ELECTORAL MAP FOR HOLLAND-BUKIT TIMAH GRC

ELECTORAL DIVISION —X—X—X—X—

POLLING DISTRICT

SCALE 1:7,500

MAP 1 OF 4

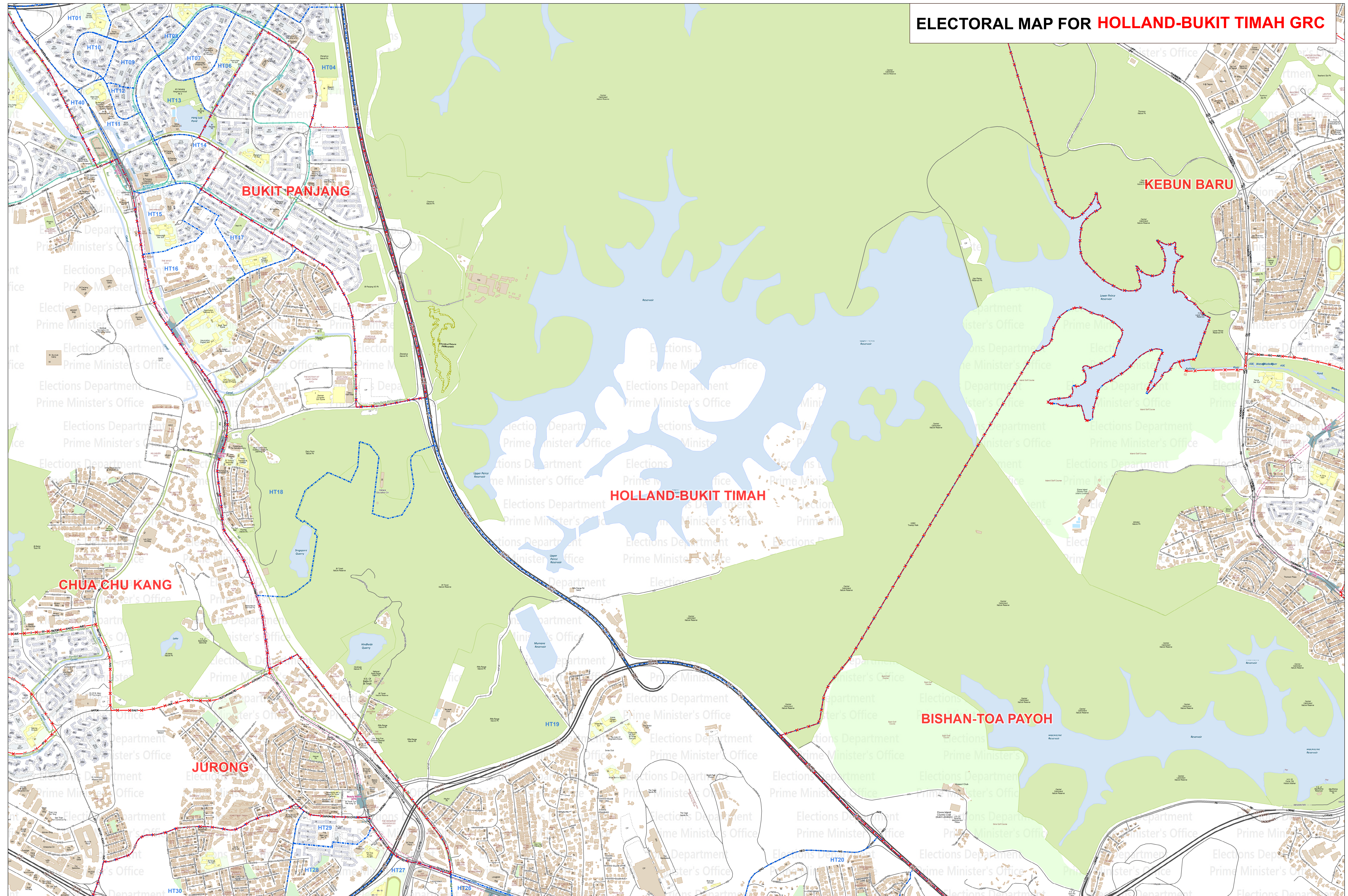
Electoral division and polling district boundaries do not represent the extent of Singapore's territorial waters.
Boundary Date: Updated as at 3 January 2023
Electoral and Polling District Boundaries: Updated as at 14 February 2025

ALL RIGHTS RESERVED

SLA

No map may be produced wholly or in part without the written permission of the data supplier.
For more information please contact:
Geographic Information Systems
Geographic Information Systems & Solutions Division
Singapore Land Authority
10 Market Street, Singapore 048932
Level 1, Electoral House
Singapore 107807

ELECTORAL MAP FOR **HOLLAND-BUKIT TIMAH GRC**



Legend

- HDB Building
- Non-HDB Building
- MRT/LRT Station

ELECTORAL MAP FOR HOLLAND-BUKIT TIMAH GRC

ELECTORAL DIVISION —X—X—X—X—

POLLING DISTRICT —X—X—X—X—

SCALE 1:7,500

MAP 2 OF 4

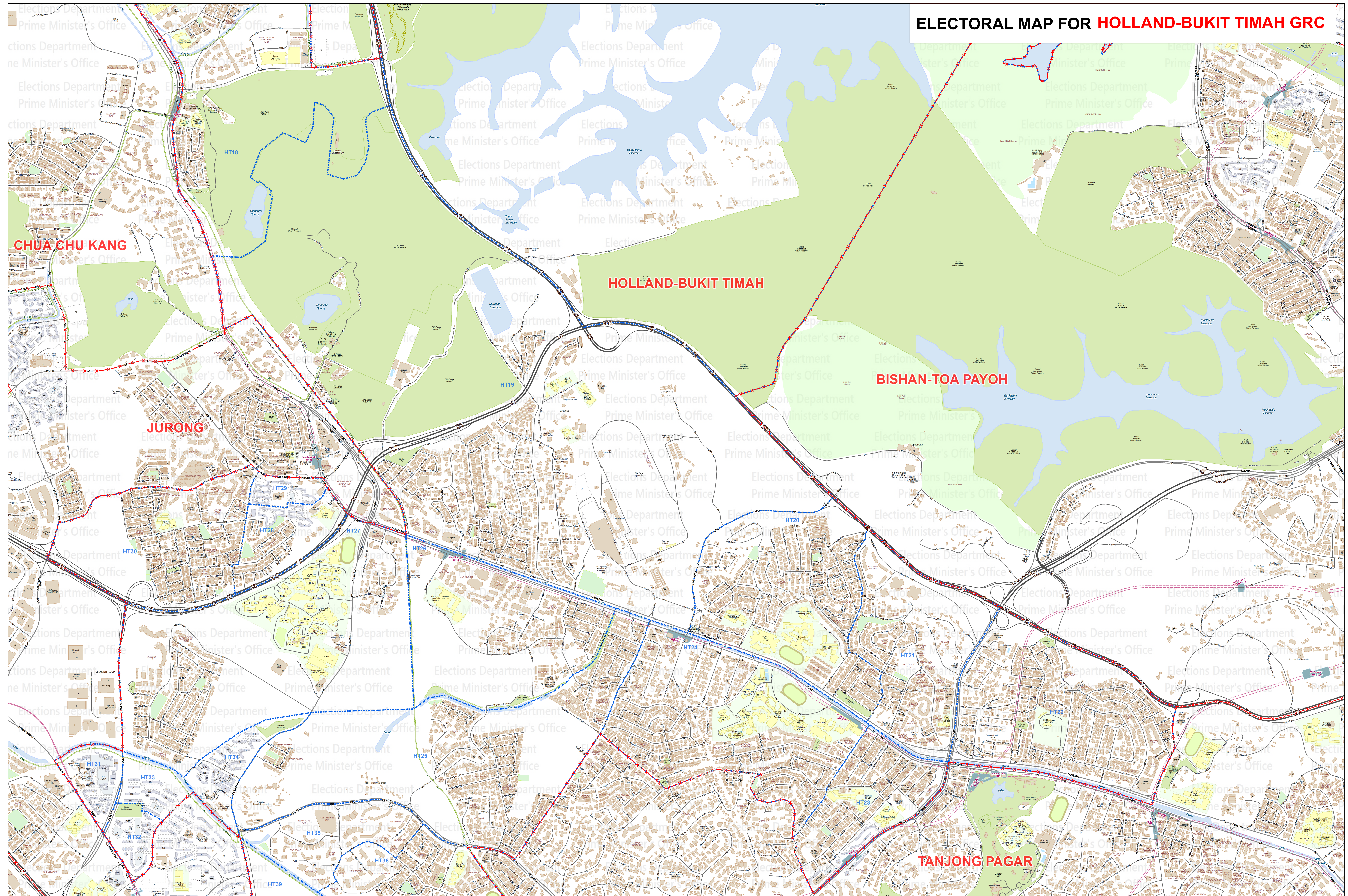
Electoral division and polling district boundaries do not represent the extent of Singapore's territorial waters.
Boundary Data: Updated as at 3 January 2025.
Electoral and Polling District Boundaries: Updated as at 14 February 2025.

SLA

ALL RIGHTS RESERVED

No map may be produced wholly or in part without the written permission of the data provider.
For more information please contact:
Geographic Information Systems
Geographic Information Systems & Solutions/Geospatial & Data
Singapore Land Authority
Level 1, Terminal One, Singapore
Singapore 039701

ELECTORAL MAP FOR **HOLLAND-BUKIT TIMAH GRC**



CHUA CHU KANG

HOLLAND-BUKIT TIMAH

BISHAN-TOA PAYOH

JURONG

TANJONG PAGAR

Legend

- HDB Building
- Non-HDB Building
- MRT/LRT Station

ELECTORAL MAP FOR HOLLAND-BUKIT TIMAH GRC

ELECTORAL DIVISION —X—X—X—X—

POLLING DISTRICT —————

SCALE 1:7,500

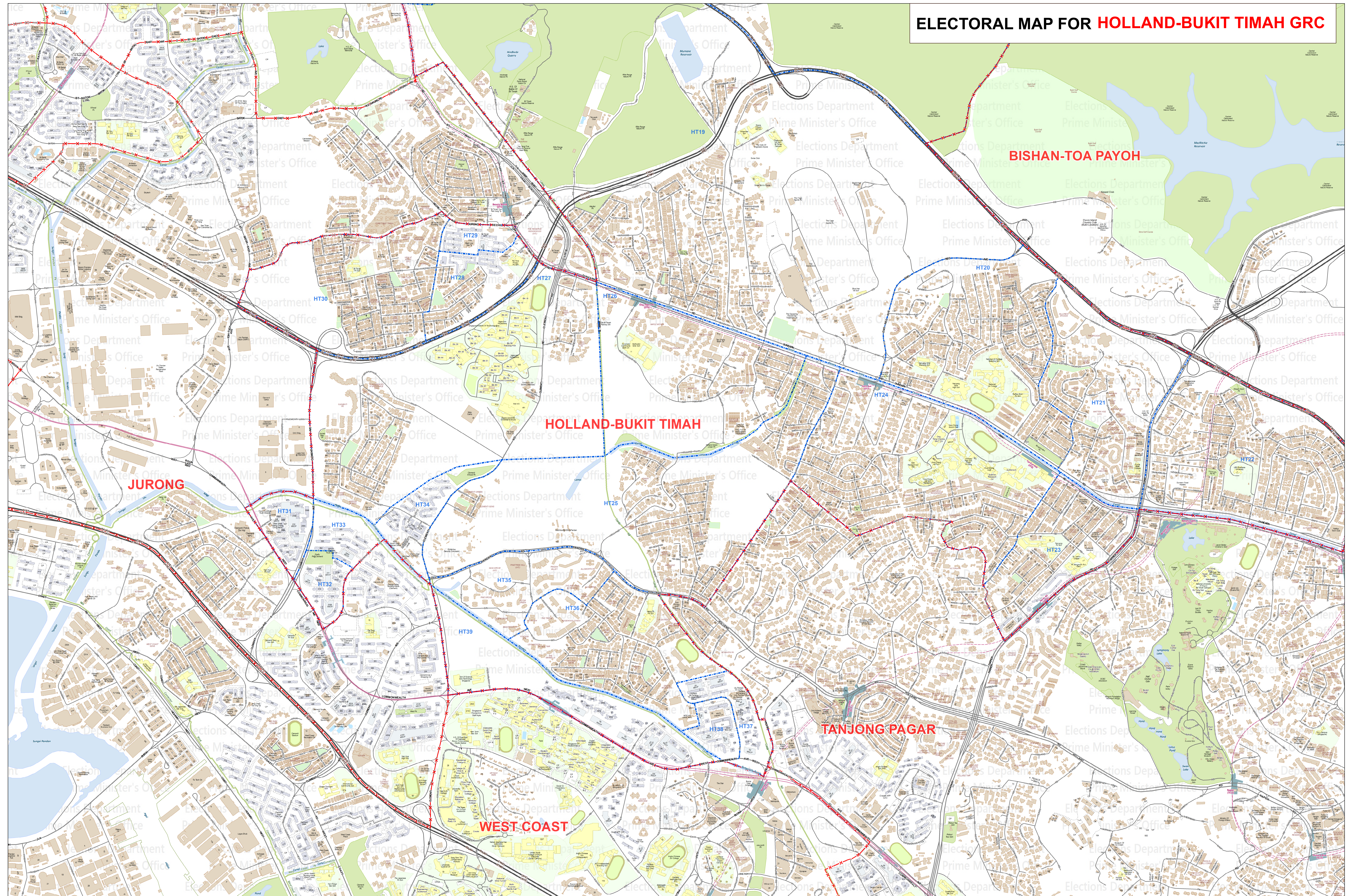
MAP 3 OF 4

Electoral division and polling district boundaries do not represent the extent of Singapore's territorial waters.
Boundary Date: Updated as of 13 January 2023.
Electoral and Polling District Boundaries: Updated as of 14 February 2023.

ALL RIGHTS RESERVED

No map may be produced wholly or in part without the written permission of the data provider.
For more information please contact:
Elections Department
Copyright: Statim & Solutions/Geospatial & Data
Singapore Land Authority
Land Use, Planning, Transport and Business Service Centre
Level 1, Terminal One
Singapore 039701

ELECTORAL MAP FOR HOLLAND-BUKIT TIMAH GRC



Legend

- HDB Building
- Non-HDB Building
- MRT/LRT Station

ELECTORAL MAP FOR HOLLAND-BUKIT TIMAH GRC

ELECTORAL DIVISION —X—X—X—X—

POLLING DISTRICT

SCALE 1:7,500

MAP 4 OF 4

Electoral division and polling district boundaries do not represent the extent of Singapore's territorial waters.
Boundary Date: Updated as at 13 January 2023
Electoral and Polling District Boundaries: Updated as at 14 February 2023

ALL RIGHTS RESERVED

SLA

No map may be produced wholly or in part without the written approval of the data supplier.
For more information please contact:
Senior Executive Manager
Candidate Services & Elections/Candidate & Data
Singapore Land Authority
Level 1, 1 Raffles Place
Singapore 048613